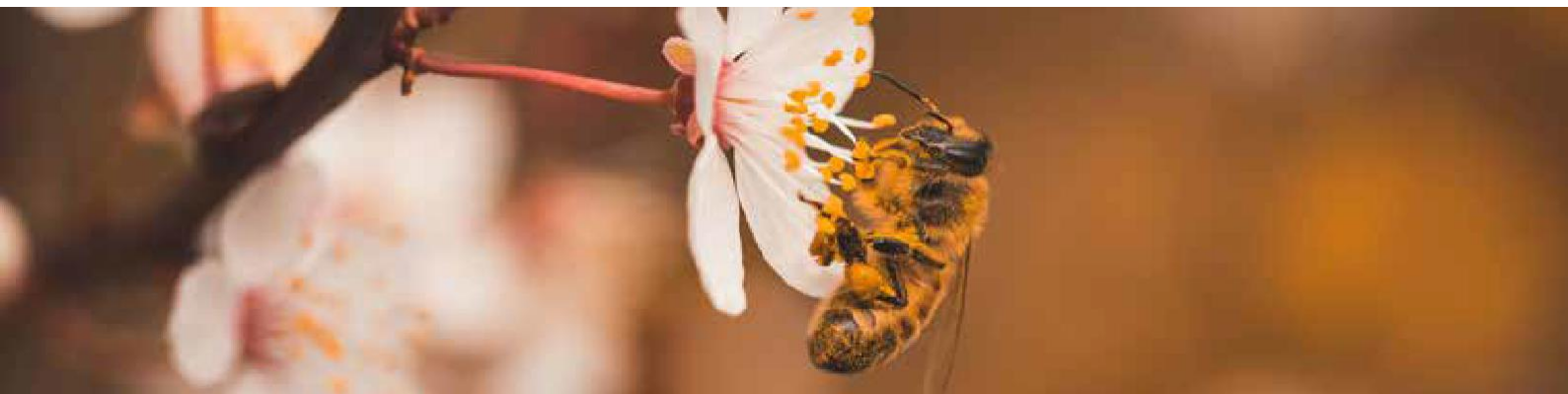




# Honey tests and volumes



Analytica, along with our partner laboratories, offer the widest range of honey tests in New Zealand. This technical note explains how much honey to send in for testing, the testing capabilities of the four labs, and how we work together to service the honey industry.

## **Analytica Laboratories**

Analytica performs the chemistry and PCR testing on honey. Analytica also has a large research and development team who are able to create new tests that are not offered anywhere else in the world!

## **CAIQTest Pacific**

A sister lab of Analytica, CAIQTest Pacific perform the GB methods of microbiology testing needed for export to China.

## **Food Lab Pacific**

A joint venture between Analytica Laboratories and Milk Test NZ, Food Lab Pacific performs the standard methods of microbiology testing.

## **MS3 Solutions**

MS3 Solutions are a research and development laboratory who perform our pollen count, royal jelly, and bee venom testing.



Test	Grams needed to perform test
Manuka 3in1	50g needed to complete all Analytica and MS3 testing
Leptosperin	
MPI Manuka Markers	
MPI Manuka DNA	
Tutin Individual	
C4 Sugars - AOAC	
C4 Sugars - Screen	
Physical Properties	
Moisture Only	
Colour Only	
Diastase (Nitrophenol)	
Diastase (Phadebas)	
Glyphosate	
American Foulbrood (AFB)	
Kanuka Assay	
Heavy Metals	
Pollen Count	
Aerobic Plate Count	50g needed to complete all CAIQTest and Food Lab Pacific testing
Yeast	
Mould	
Yeast & Mould	
Osmophilic Yeast	
E. coli (Petrifilm)	
Total Coliforms (Petrifilm)	
E. coli (MPN)	
Total Coliforms (MPN)	
Faecal Coliforms (MPN)	
Staphylococcus aureus	
Salmonella	
Enterobacteriaceae	
Free Acidity	
pH	
Foreign Matter	
Aerobic Plate Count (GB)	
Yeast ONLY (GB)	
Mould ONLY (GB)	
Total Yeast & Mould (GB)	
Osmophilic Yeasts (GB)	
Salmonella (GB)	
Staphylococcus aureus (GB)	
Coliforms (GB)	
Total Activity	
Non-Peroxide Activity	
Lead & Zinc (GB)	
Sugar Profile (GB)	

